



RESTAURANT END CAP AVAILABLE

Interstate 29 & NW Barry Road (SEQ)

6141-6151 NW Barry Road, Kansas City, MO



LEASE RATE: \$30/SF NNN | 4,378 SF - 5,500 SF

DEMOGRAPHICS

	1 mile	3 miles	5 miles
Estimated Population	10,555	56,076	122,659
Avg. Household Income	\$115,612	\$120,772	\$115,207

- Former Panera Bread space
- Located on Barry Road Corridor
- All restaurant infrastructure in place
- Excellent visibility and signage to Barry Road
- Immediate access to I-29
- Heavy traffic counts



CLICK HERE TO VIEW MORE LISTING INFORMATION

For More Information Contact:

Exclusive Agents

PHIL PECK, CCIM | 816.412.7364 | ppeck@blockandco.com

JODY MINDER | 816.916.4039 | jminder@blockandco.com

DAVID BLOCK | 816.412.7400 | dblock@blockandco.com





RESTAURANT END CAP AVAILABLE

Interstate 29 & NW Barry Road (SEQ)

6141-6151 NW Barry Road, Kansas City, MO



LEASE RATE: \$30/SF NNN | 4,378 SF - 5,500 SF

DEMOGRAPHICS

	1 mile	3 miles	5 miles
Estimated Population	10,555	56,076	122,659
Avg. Household Income	\$115,612	\$120,772	\$115,207

- Former Panera Bread space
- Located on Barry Road Corridor
- All restaurant infrastructure in place
- Excellent visibility and signage to Barry Road
- Immediate access to I-29
- Heavy traffic counts



CLICK HERE TO VIEW MORE LISTING INFORMATION

For More Information Contact:

Exclusive Agents

PHIL PECK, CCIM | 816.412.7364 | ppeck@blockandco.com

JODY MINDER | 816.916.4039 | jminder@blockandco.com

DAVID BLOCK | 816.412.7400 | dblock@blockandco.com





Restaurant End Cap Coming Available

I-29 & NW Barry Road (SEQ)
6141-6151 NW Barry Road, Kansas City, MO

4,378 SF - 5,500 SF
AVAILABLE FOR LEASE

AERIAL



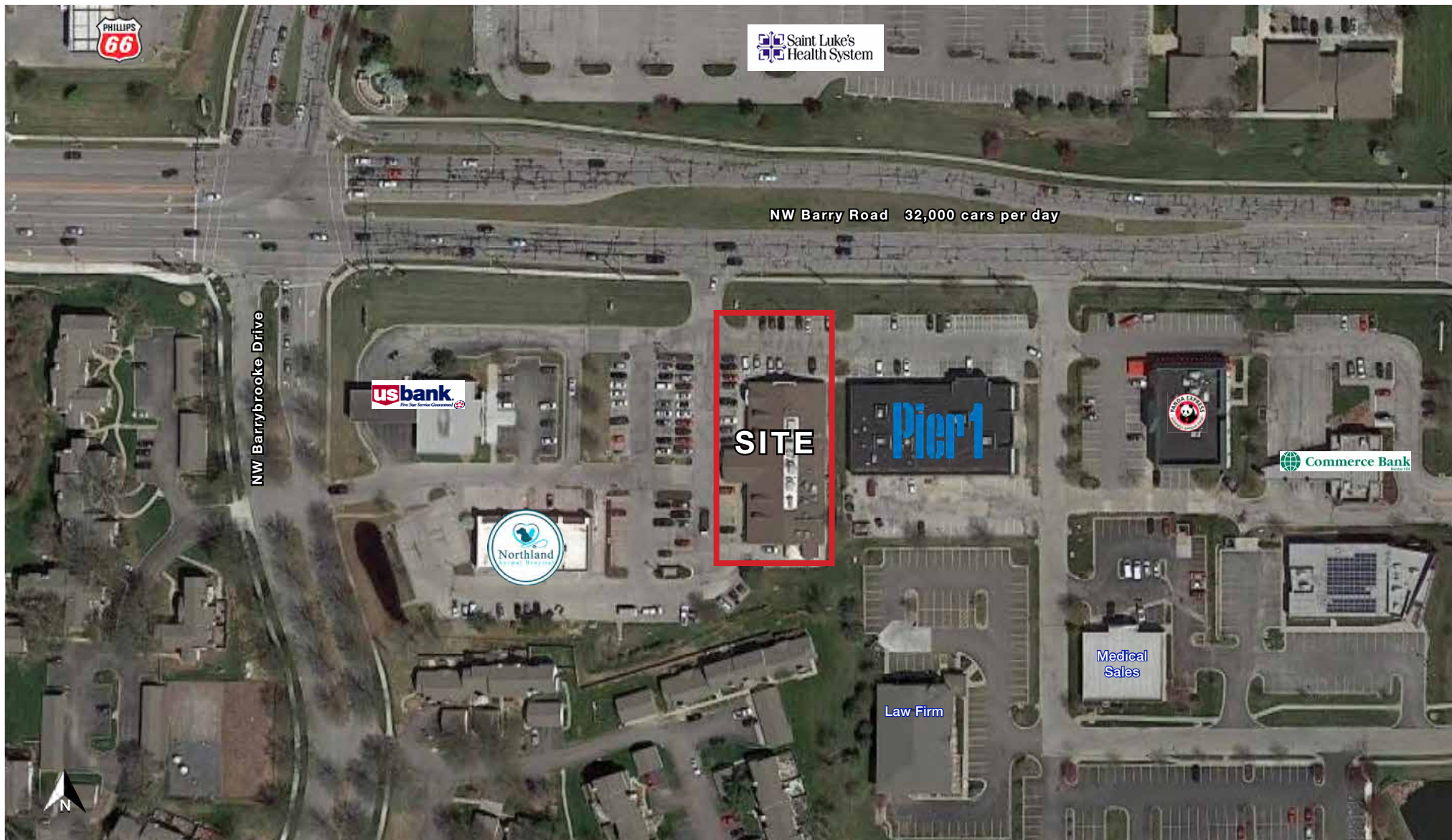


Restaurant End Cap Coming Available

I-29 & NW Barry Road (SEQ)
6141-6151 NW Barry Road, Kansas City, MO

4,378 SF - 5,500 SF
**AVAILABLE
FOR LEASE**

AERIAL



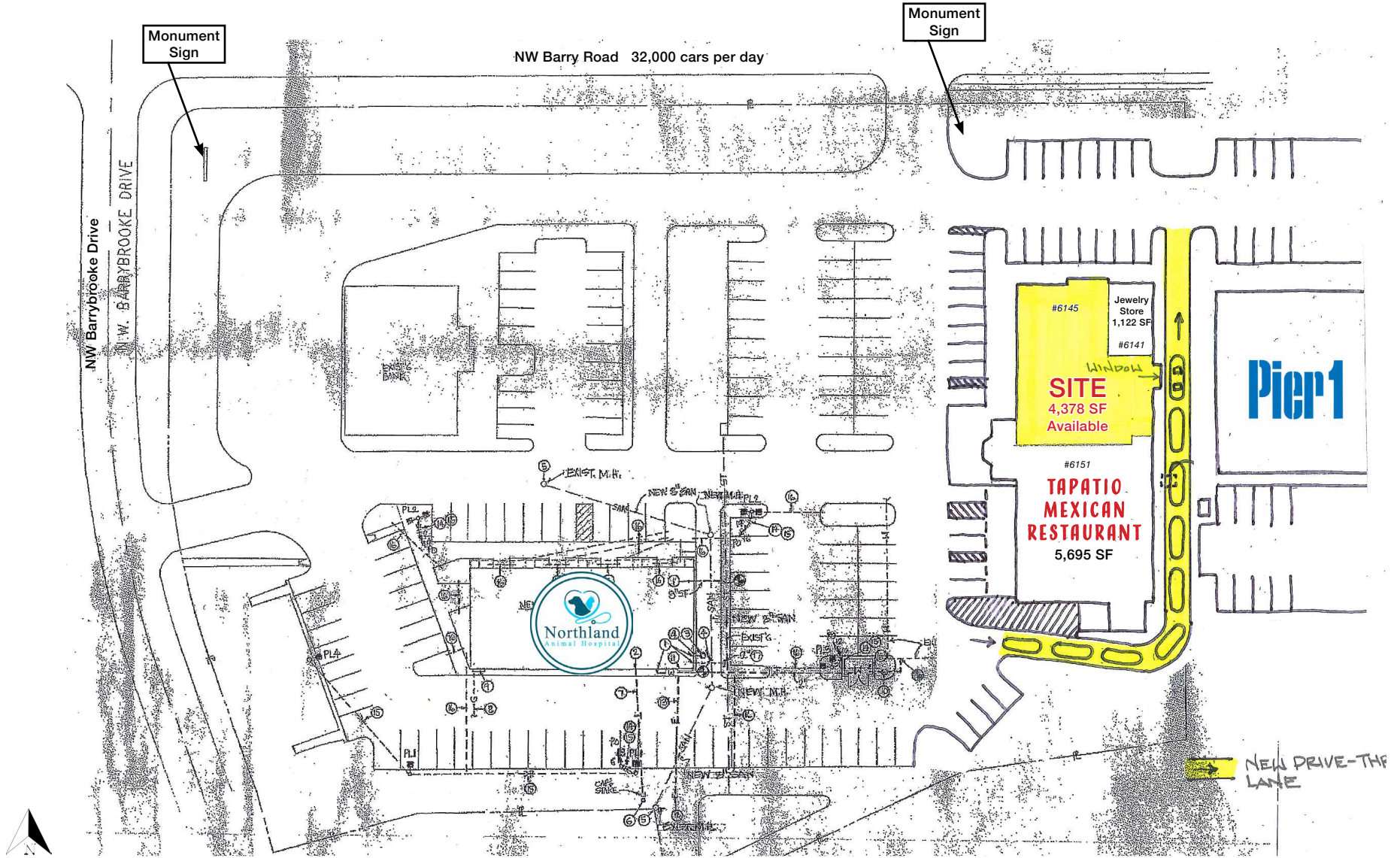


Restaurant End Cap Coming Available

I-29 & NW Barry Road (SEQ)
6141-6151 NW Barry Road, Kansas City, MO

4,378 SF - 5,500 SF
**AVAILABLE
FOR LEASE**

CONCEPTUAL DRIVE-THRU PLAN





Restaurant End Cap Coming Available

I-29 & NW Barry Road (SEQ)
6141-6151 NW Barry Road, Kansas City, MO

4,378 SF - 5,500 SF
**AVAILABLE
FOR LEASE**

DRONE AERIAL

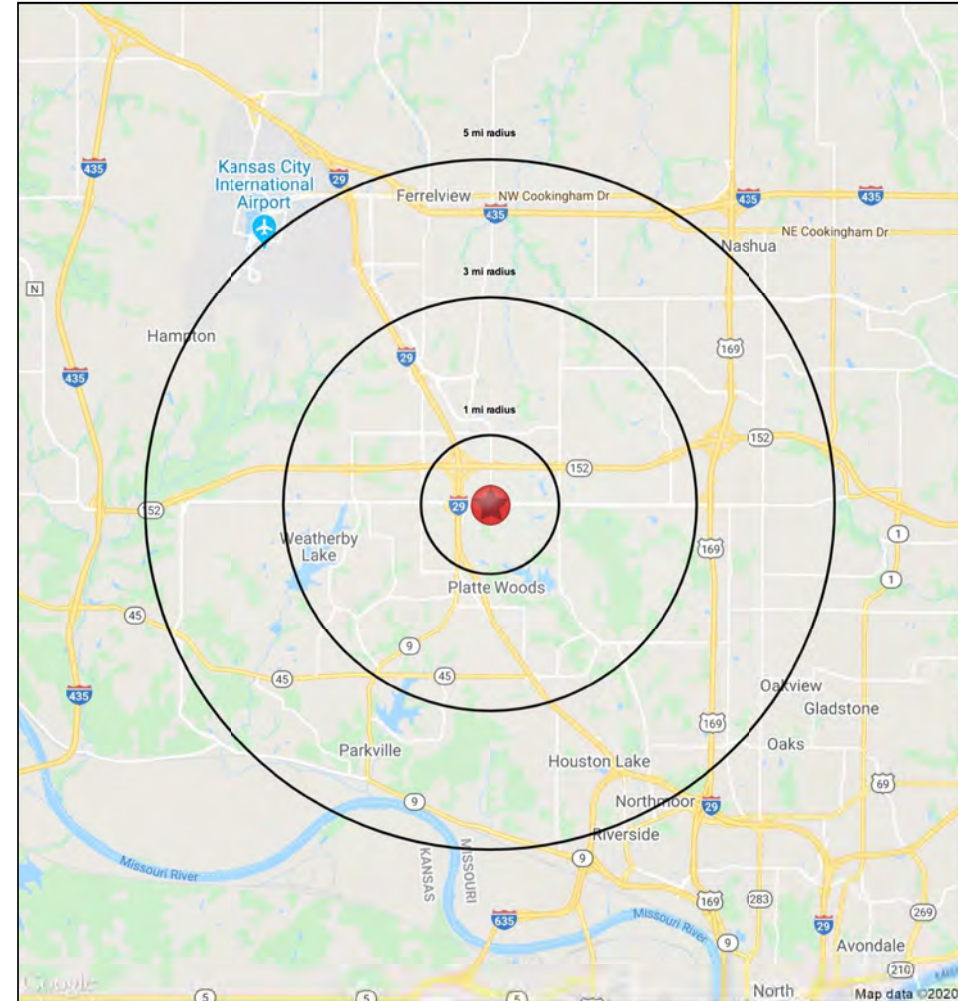
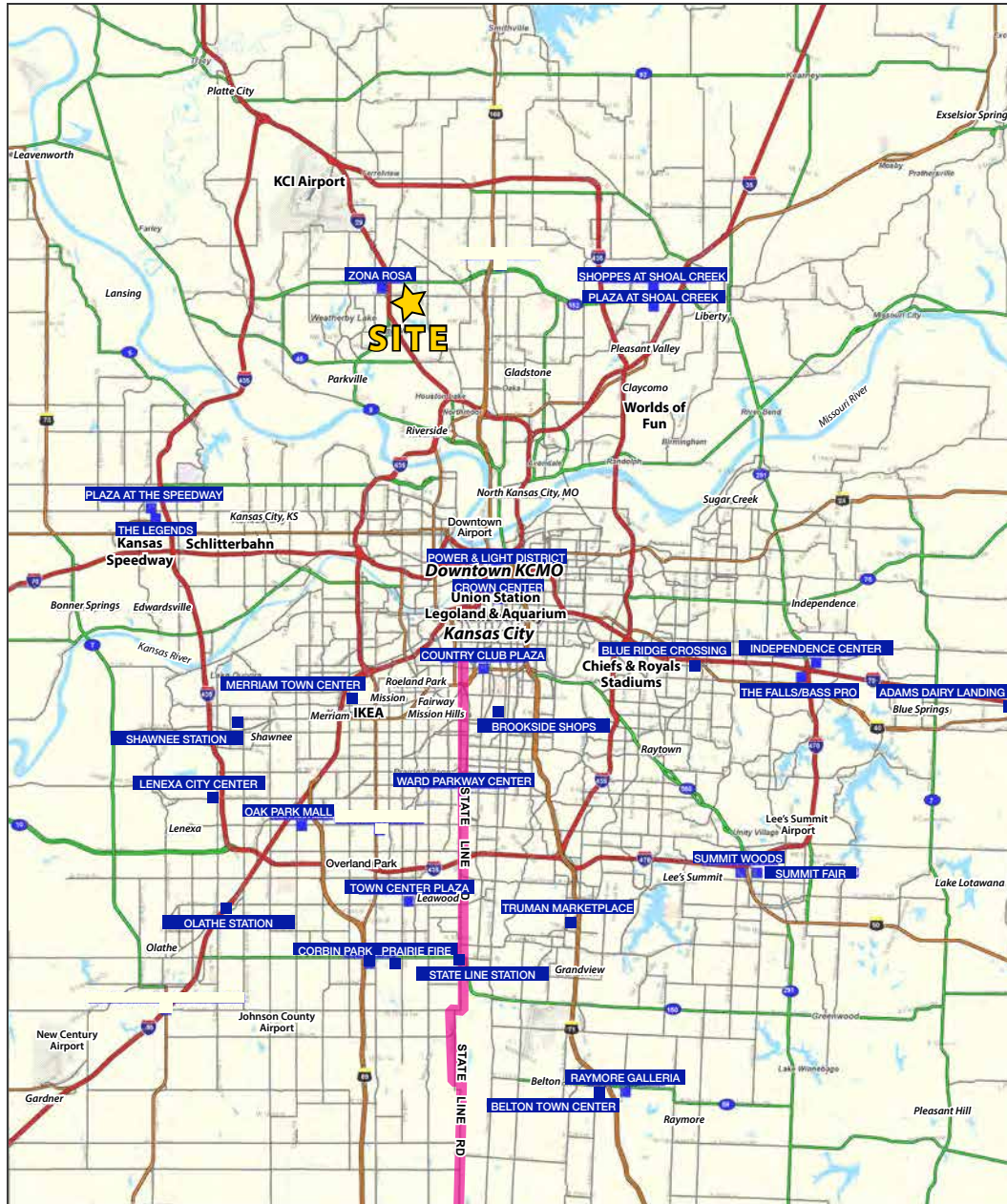




Restaurant End Cap Coming Available

I-29 & NW Barry Road (SEQ)
6141-6151 NW Barry Road, Kansas City, MO

**4,378 SF - 5,500 SF
AVAILABLE
FOR LEASE**





Restaurant End Cap Coming Available

I-29 & NW Barry Road (SEQ)

6141-6151 NW Barry Road, Kansas City, MO

6141 NW Barry Rd	1 mi radius	3 mi radius	5 mi radius
Kansas City, MO 64151			
Population			
2023 Estimated Population	10,555	56,076	122,659
2028 Projected Population	11,062	60,128	132,794
2020 Census Population	10,179	53,824	118,238
2010 Census Population	9,443	44,316	99,916
Projected Annual Growth 2023 to 2028	1.0%	1.4%	1.7%
Historical Annual Growth 2010 to 2023	0.9%	2.0%	1.8%
2023 Median Age	36.8	38.1	37.5
Households			
2023 Estimated Households	4,599	23,800	50,752
2028 Projected Households	4,959	26,219	56,365
2020 Census Households	4,385	22,657	48,331
2010 Census Households	4,169	18,979	41,256
Projected Annual Growth 2023 to 2028	1.6%	2.0%	2.2%
Historical Annual Growth 2010 to 2023	0.8%	2.0%	1.8%
Race and Ethnicity			
2023 Estimated White	73.5%	77.0%	77.0%
2023 Estimated Black or African American	12.7%	10.6%	10.5%
2023 Estimated Asian or Pacific Islander	4.8%	4.3%	4.1%
2023 Estimated American Indian or Native Alaskan	0.3%	0.3%	0.4%
2023 Estimated Other Races	8.6%	7.7%	8.1%
2023 Estimated Hispanic	8.9%	7.7%	7.9%
Income			
2023 Estimated Average Household Income	\$115,612	\$120,772	\$115,207
2023 Estimated Median Household Income	\$88,731	\$98,696	\$91,320
2023 Estimated Per Capita Income	\$50,426	\$51,307	\$47,722
Education (Age 25+)			
2023 Estimated Elementary (Grade Level 0 to 8)	0.3%	0.9%	1.3%
2023 Estimated Some High School (Grade Level 9 to 11)	2.1%	2.3%	3.1%
2023 Estimated High School Graduate	16.0%	18.1%	22.4%
2023 Estimated Some College	27.4%	22.9%	22.5%
2023 Estimated Associates Degree Only	8.4%	8.3%	8.4%
2023 Estimated Bachelors Degree Only	29.3%	29.4%	26.8%
2023 Estimated Graduate Degree	16.4%	18.1%	15.5%
Business			
2023 Estimated Total Businesses	639	1,784	3,868
2023 Estimated Total Employees	5,588	14,988	42,301
2023 Estimated Employee Population per Business	8.7	8.4	10.9
2023 Estimated Residential Population per Business	16.5	31.4	31.7

©2023 Sites USA Chandler Arizona 480-491-1112 Demographic Source: Applied Geographic Solutions 4/2023 TIGER Geography - RS1

